

History

The chn will use the census to make inferences and to draw conclusions about the local area's past. By



combining census data with other sources, we aim to develop a comprehensive understanding of historical conditions and track how the area has evolved over time.

French

In French, the chn will learn how to name places within the school, describe their location and their purpose, say the time in French and read a school timetable.

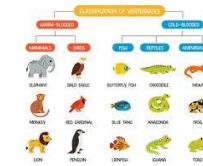
Physical Education



We will be developing our hockey skills in outdoor PE and learning a variety of dances in indoor PE.

Science

In Science, the chn will learn about the work of Carl Linnaeus and how he classified living things. The children will define the characteristics of different groups of living things and use a classification key to identify different organisms.



English



First, the chn will be reading 'The Invention of Hugo Cabret' by Brian Selznick and writing an autobiography based on the text, illustrations and the film. They will then explore 'The Arrival' and produce a narrative inspired by the illustrations and practice the different reading skills in Destination Reader with the book 'Black and British'

Spelling: rules related to suffixes and Year 6 Spelling Bee words
Grammar: accuracy in basic punctuation, inverted commas, main clause, subordinate clause, relative clause, semi-colons and colons.

Maths



The children will use the Maths No Problem approach which enables

them to develop fluency and reasoning skills.

This term we will cover the following topics: Place value, the four operations, Fractions, Decimals and Measurement. There will also be weekly arithmetic lessons to prepare for the end of KS2 test.

Computing

The children will explore codebreaking at Bletchley Park, key historical figures in computing and how computers have evolved over time. We will also design a computer of the future and create an audio advert.

Art

In Art, the children will explore creative photographic techniques, create new images through photomontage and apply digital photography to art design and composition.

Music

The children will learn to recognise the black and white note keyboard pattern, identify notes and play tunes. They will read treble clef notation with increasing accuracy.

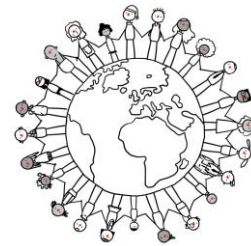


PSHE

In PSHE, the children will look at families and relationships, focusing on how to demonstrate respect in all situations. They will also look at how to resolve disputes and understand how stereotypes might influence our views.

Religious Education

In RE, the children will focus on Humanism and explore how all people, religious or not, can learn from its principles. Also, they will learn about the key beliefs held by Humanists and the principles that govern their approach to life.



Curriculum Overview Year 6 – Autumn 1 2025

Miss Abdulhadi, Miss Wilkinson, Mrs Wishart Ms Thompson, Mrs Gangwani and Ms Kostic

How parents can support at home:

Reading: Children should read 30 minutes daily and complete their Reading Record, which must be brought to school every day.

Spelling: Support your child in learning spelling rules and words.

Times Tables Rock Stars: Help your child master multiplication tables up to 12 and related division facts. **Arithmetic:** Assist your child with any arithmetic concepts they find challenging using the tests sent home as guidance.

Important Information:

PE days Poplar: Tuesday & Friday

PE days Cedar: Monday & Friday

Homework:

Monday – Spelling (due on Friday)

Friday – Grammar (due on Wednesday)

Friday – Maths (due on Wednesday)