



West Twyford Newsletter

Friday 19th June 2026

Tel: 020 8965 6858

Email: admin@west-twyford.ealing.sch.uk

[West Twyford Calendar](#)

Year 6 School Journey

Last week children from year 6 went on our annual school journey. This is a 3 day residential trip for year 6 and a fantastic opportunity full of fun! Children took part in a range of activities including , climbing, orienteering and archery as well as playing games and dancing at the disco. This was a very successful trip and a big thank you to the fantastic staff who gave so generously of their time: Miss Abdulhadi, Miss Wilkinson, Miss Sewell and Miss Thompson.

We have all noticed the impact this trip has on the children; it teaches key skills such as independence and resilience that children need as they enter the next phase of their education.

We recommend that all children in year have this wonderful experience and we will be speaking to the new year 6 parents about this in September.























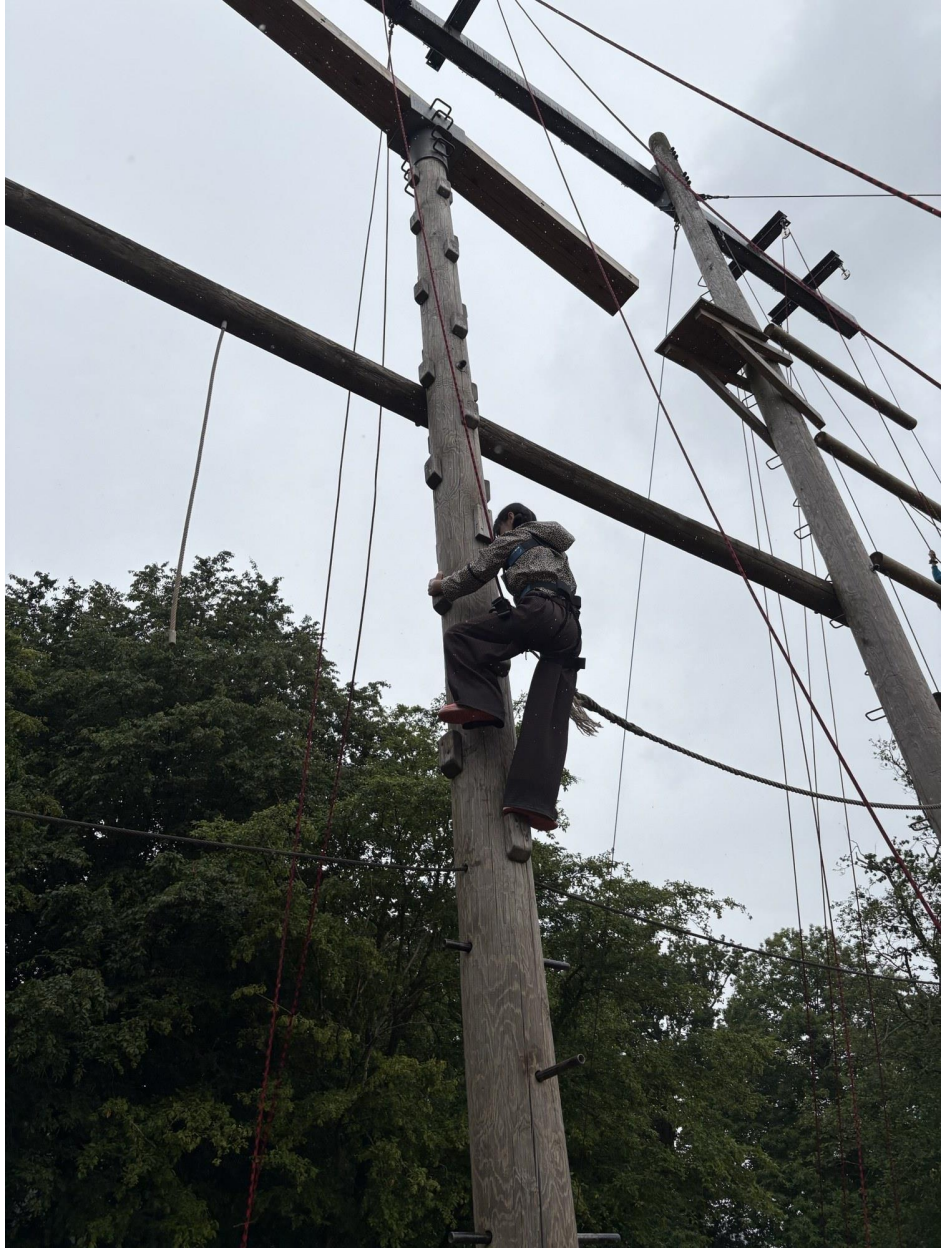




































Summer Fair - Thursday July 2nd

Tickets are going live today at 4pm on School Money.

This year we have reduced ticket prices child: £5 or £3 for pupil premium. Adults: a suggested £1 donation on the gate.

Please purchase child tickets in advance- **tickets are not available on the gate.**

Please remember that children must be accompanied by an adult

Bottle donations

We are having a non-uniform day on Friday 26th June and ask the children to bring in a bottle for the tombola.

This could be a bottle of fizzy drink, bottle of squash, bottle of shampoo, bottle of sweets, bottle of bubble bath etc. No alcohol please.

You may also bring a cash donation too; buckets will be available on the gates.

Raffle Donations

We are also looking for raffle prize donations, so if you work for a company who could donate a prize or have a friend/ family member who could donate a prize,

please bring it to the office or email admin@west-twifyford.ealing.sch.uk with your donation.

Thank you for your support.

Hot Weather

The summer weather has arrived and we are making sure that our children are cool. We have coolers in each class and there is water available in classes and in the playground .

Please help to keep your child cool by providing, sunhats, and a labelled water bottle (plastic and metal only please) and you may wish to apply sunscreen before children come into school (we cannot apply it here). Children should wear cool. loose clothing such as shorts and dresses. Clothes need to be appropriate for school but when it is very hot, such as predicted next week, we relax our uniform requirements; please choose sensible and appropriate clothes to keep children cool.

Please note that **handheld fans are not allowed in school**; we have had dangerous incidents and these are not safe to have in school.

Finally, please remember that ice creams should not be brought onto the school site. We ask for healthy snacks only and ice creams can cause a mess. If you want to buy your child an ice cream, please do so after they have left the school

Thank you for your support.

On time for School

School starts at 8.55 each morning and every minute in school is an important learning opportunity. Children who are late to school do not start the day as well and miss important learning. In our younger years they miss phonics lessons and these are vital for children to learn to read.

Our school gates open at 8.45 and there is no reason to be late. Please aim for 8.45 and then you will always be on time.

If you are late to school school staff will likely remind you of this and you will need to register your children in the school office.

Please help us to give your child the best education!

Thank you for your support.

Road Works on Twyford Abbey Road

We have been informed that Affinity Water are carrying out network improvements and will be replacing water pipes on Twyford Abbey Road. This work will cause disruption to traffic and will be ongoing from June to November.

Please expect some disruption and allow extra time if you are driving to school. Where possible please come to and from school without a car; we always recommend walking, cycling or scooting.

Thank you for your support

Role Models of the Week

Well done to the following children for their outstanding learning and behaviour in school this week!

Behaviour Award: Aarav & Safa (Year 1), Lojain & Zorah (Year 2), Nouser & Jana (Year 3), Anhar & Dalia (Year 4), Mila & Delia (Year 5), Caleb & Anaya (Year 6)

Learning Award: Mariyam & Hewad (Year 1), Bazyan & Ayub (Year 2), Taraf & Haneen (Year 3), Jassim & Aleen (Year 4), Leon & Nouf (Year 5), Nisa & Fatima (Year 6)

Attendance and Punctuality

We are delighted to say that **these classes achieved 95%+ attendance this week!**

Congratulations!

Well done to: Year 4 Pine, Year 2 Sycamore, Reception Horse Chestnut, Year 1 Ash, Year 4 Elder, Year 6 cedar, Year 6 Poplar,

Punctuality, coming to school on time, is very important. **Learning in school starts at 8.55, and we need all children to be in school ready to learn.**

We teach phonics first thing in the morning, if children are late then they miss an very important learning opportunity. **School gates open at 8.45: please ensure that your child is on time to make the most of the school day.**

Punctuality cup winners: Year 1 Ash